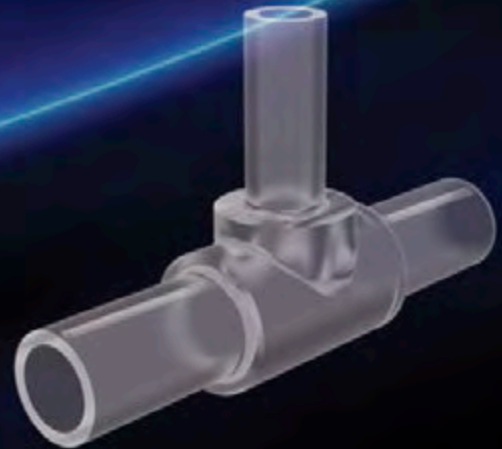
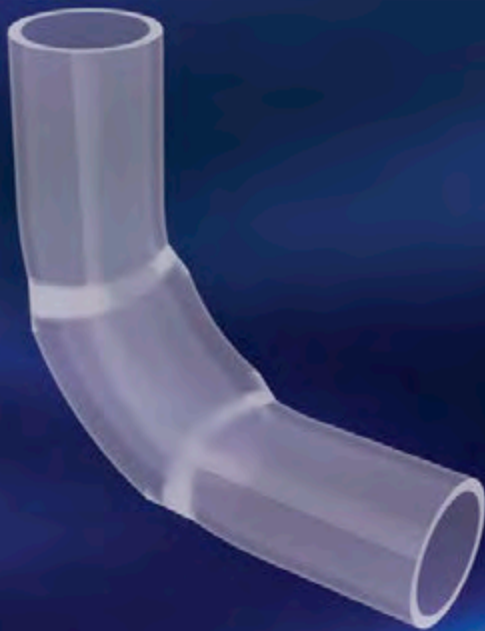


# *Fit-LINE*



**PFA Tube Weld Fittings**

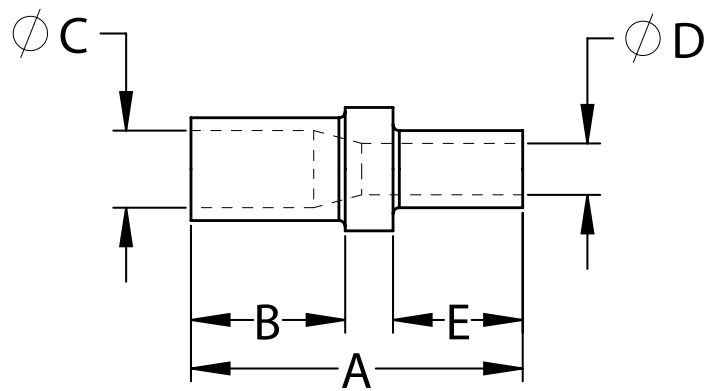


Fit-LINE's PFA Tube Weld Fittings brings to the Semiconductor, Biotech, Pharmaceutical and Ultra Pure Water industries an innovative and economical way of dispensing high-purity fluids.

- **QUALITY** – Every Fit-LINE fitting is manufactured from high purity PFA resin, providing chemical resistance and high purity. This material is well known for use in ultra pure water and chemical applications and SEMI-F57-0301 compliant.
- **EFFICIENCY** – Our Sweep Elbows have a fully swept flow path allowing up to 300% more flow than standard elbows.
- **SIZE RANGE** – Size range is from ¼" to 1-¼" in all the popular fitting configurations. Special fitting configurations are available on a custom basis.
- **MOLDING** – Only dedicated molds and process equipment are used for high purity production. This eliminates the possibility of cross-contamination, thus assuring "Quality without compromise."
- **HIGH PURITY** – State-of-the-art tube fittings are ideal for UPW (Ultra Pure Water) and semiconductor grade chemical applications.
- **PACKAGING** – Cleaning and packaging are proprietary processes conducted in a Class 1000 clean area using a five-stage cleaning and rinsing process. Fittings are packaged in clean 6mil polyethylene bags, ensuring the highest level of protection and contamination control.

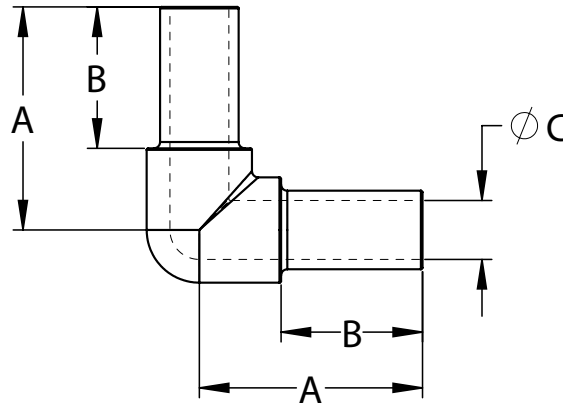
Please consult factory for other Tube Weld Fittings not shown. Custom and special configurations available upon request.

Weld Straight Reducer (Tube x Tube)						
PFA Part No.	Tube OD	A	B	C	D	E
WSR6TS4TS	3/8" X 1/4"	1.62	.55	.25	.15	.82
WSR8TS4TS	1/2" X 1/4"	1.62	.55	.38	.15	.82
WSR8TS6TS	1/2" X 3/8"	1.63	.55	.38	.25	.82
WSR12TS4TS	3/4" X 1/4"	1.63	.55	.63	.15	.82
WSR12TS6TS	3/4" X 3/8"	1.63	.55	.63	.25	.82
WSR12TS8TS	3/4" X 1/2"	1.63	.55	.63	.38	.82
WSR16TS4TS	1" X 1/4"	1.63	.55	.88	.15	.82
WSR16TS6TS	1" X 3/8"	1.63	.55	.88	.25	.82
WSR16TS8TS	1" X 1/2"	1.63	.55	.88	.38	.83
WSR16TS12TS	1" X 3/4"	1.54	.55	.88	.63	.74
WSR20TS16TS	1-1/4" X 1"	1.66	.76	1.10	.88	.65

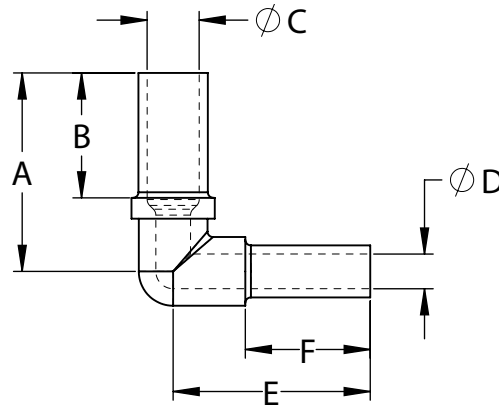


1/4"=6.35mm; 3/8"=9.52mm; 1/2"=12.70mm; 3/4"=19.05mm; 1"=25.40mm and 1-1/4"=31.75mm

Weld Elbow (Tube x Tube)				
PFA Part No.	Tube OD	A	B	C
WE4TS	1/4"	1.33	.81	.15
WE6TS	3/8"	1.42	.90	.25
WE8TS	1/2"	1.68	1.16	.38
WE12TS	3/4"	1.87	1.18	.63
WE16TS	1"	2.31	1.36	.88
WE20TS	1-1/4"	2.21	1.26	1.10

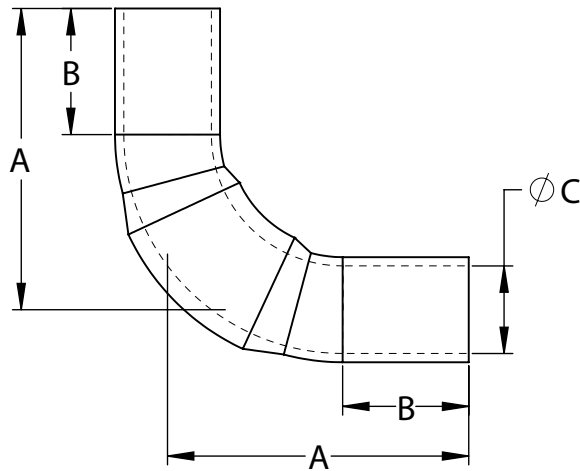


Weld Elbow Reducer (Tube x Tube)							
PFA Part No.	Tube OD	A	B	C	D	E	F
WE6TS4TS	3/8" x 1/4"	1.42	.90	.25	.15	1.33	.81
WE8TS4TS	1/2" x 1/4"	1.68	1.16	.38	.15	1.33	.81
WE8TS6TS	1/2" x 3/8"	1.68	1.16	.38	.25	1.42	.90
WE12TS8TS	3/4" x 1/2"	1.87	1.18	.63	.38	1.68	1.16
WE16TS8TS	1" x 1/2"	2.31	1.36	.88	.38	1.68	1.16
WE16TS12TS	1" x 3/4"	2.31	1.36	.88	.63	1.87	1.18



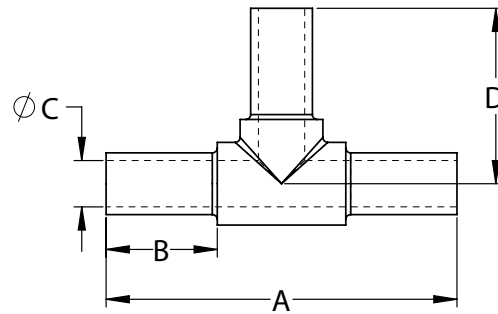
1/4"=6.35mm; 3/8"=9.52mm; 1/2"=12.70mm; 3/4"=19.05mm; 1"=25.40mm and 1-1/4"=31.75mm

Weld Elbow Sweep (Tube x Tube)				
PFA Part No.	Tube OD	A	B	C
WES4TS	1/4"	1.41	.60	.15
WES6TS	3/8"	1.61	.70	.25
WES8TS	1/2"	1.79	.80	.38
WES12TS	3/4"	2.17	.92	.63
WES16TS	1"	2.68	.92	.88

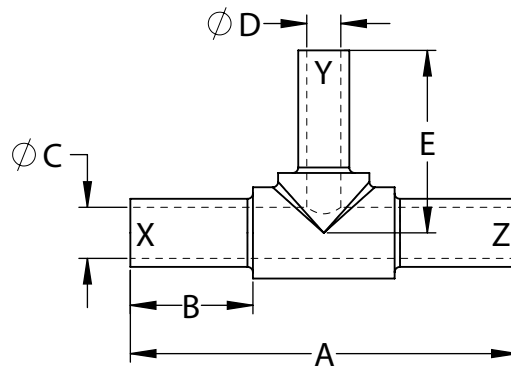


1/4"=6.35mm; 3/8"=9.52mm; 1/2"=12.70mm; 3/4"=19.05mm; 1"=25.40mm and 1-1/4"=31.75mm

Weld Tee (all Tube)					
PFA Part No.	Tube OD	A	B	C	D
WT4TS	1/4"	2.66	.81	.15	1.33
WT6TS	3/8"	2.82	.90	.25	1.41
WT8TS	1/2"	3.37	1.16	.38	1.68
WT12TS	3/4"	3.74	1.18	.63	1.87
WT16TS	1"	4.62	1.36	.88	2.31
WT20TS	1-1/4"	4.42	1.26	1.10	2.21

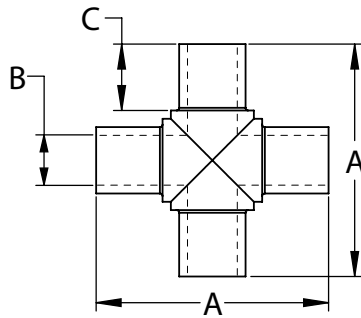


Weld Tee Reducer (all Tube)								
PFA Part No.	"X" OD	"Y" OD	"Z" OD	A	B	C	D	E
WT6TS-4TS-6TS	3/8"	1/4"	3/8"	2.82	.90	.25	.15	1.33
WT8TS-4TS-8TS	1/2"	1/4"	1/2"	3.37	1.16	.38	.15	1.33
WT8TS-6TS-8TS	1/2"	3/8"	1/2"	3.37	1.16	.38	.25	1.41
WT12TS-4TS-12TS	3/4"	1/4"	3/4"	3.74	1.18	.63	.15	1.33
WT12TS-6TS-12TS	3/4"	3/8"	3/4"	3.74	1.18	.63	.25	1.41
WT12TS-8TS-12TS	3/4"	1/2"	3/4"	3.74	1.18	.63	.38	1.68
WT16TS-8TS-16TS	1"	1/2"	1"	4.62	1.36	.88	.38	1.68
WT16TS-12TS-16TS	1"	3/4"	1"	4.62	1.36	.88	.63	1.87
WT20TS-16TS-20TS	1-1/4"	1"	1-1/4"	4.42	1.26	1.10	.88	2.31

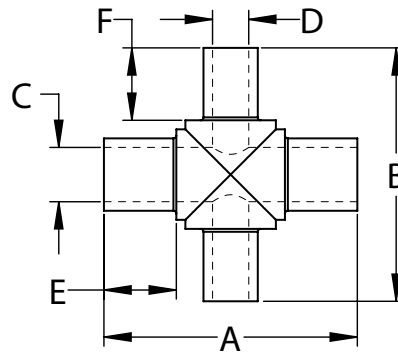


1/4"=6.35mm; 3/8"=9.52mm; 1/2"=12.70mm; 3/4"=19.05mm; 1"=25.40mm and 1-1/4"=31.75mm

Weld Cross (all Tube)				
PFA Part No.	Tube OD	A	B	C
WX4TS	1/4"	1.75	.16	.50
WX6TS	3/8"	1.75	.25	.50
WX8TS	1/2"	1.75	.38	.50
WX12TS	3/4"	2.00	.63	.50
WX16TS	1"	2.06	.88	.45
WX20TS	1-1/4"	2.64	1.10	.63



Weld Cross Reducer (Tube x Tube)							
PFA Part No.	Tube OD	A	B	C	D	E	F
WX6TS4TS	3/8" x 1/4"	1.75	1.75	.25	.16	.50	.50
WX8TS6TS	1/2" x 3/8"	1.75	1.75	.38	.25	.50	.50
WX12TS8TS	3/4" x 1/2"	2.00	2.00	.63	.38	.49	.49
WX16TS12TS	1" x 3/4"	2.06	2.20	.88	.63	.45	.51



1/4"=6.35mm; 3/8"=9.52mm; 1/2"=12.70mm; 3/4"=19.05mm; 1"=25.40mm and 1-1/4"=31.75mm



**Fit-LINE Inc.** | 2901 Tech Center Drive, Santa Ana, CA 92705  
Phone: (714) 549-9091 | Fax: (714) 549-2778 | [www.fitlineinc.com](http://www.fitlineinc.com)

Copyright 2012 Fit-LINE Inc. | Printed in USA